

PLAN URBANISTIC ZONAL

ZONA DE LOCUINTE SI FUNCTIUNI COMPLEMENTARE

jud. TIMIS, com. STIUCA, loc. STIUCA, EXTRAVILAN,
CF 404111, CF 404171, CF 404277 STIUCA



INVENTAR DE COORDONATE ESTERNE 1970 CAD 404277 S-24000 MP

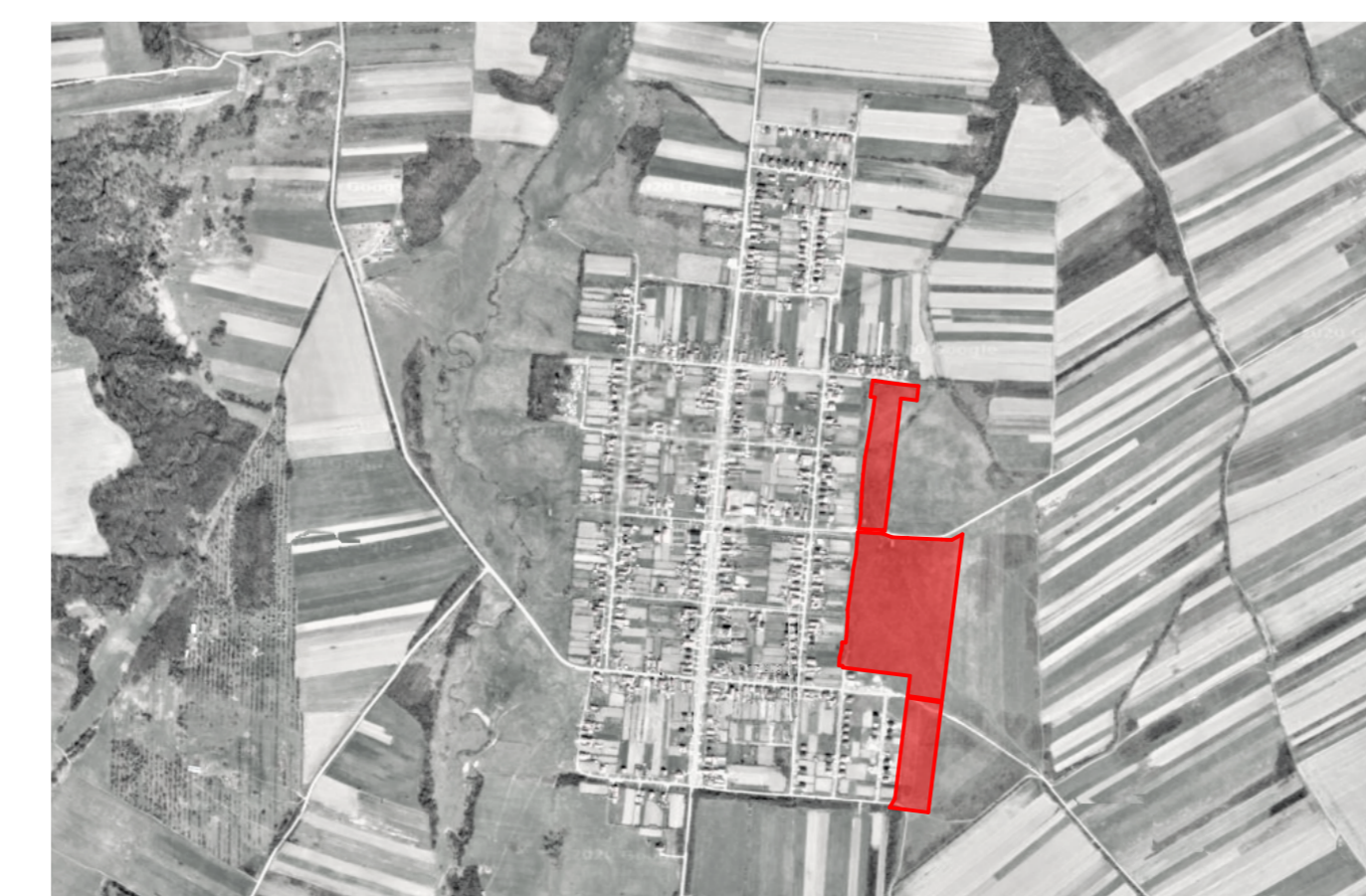
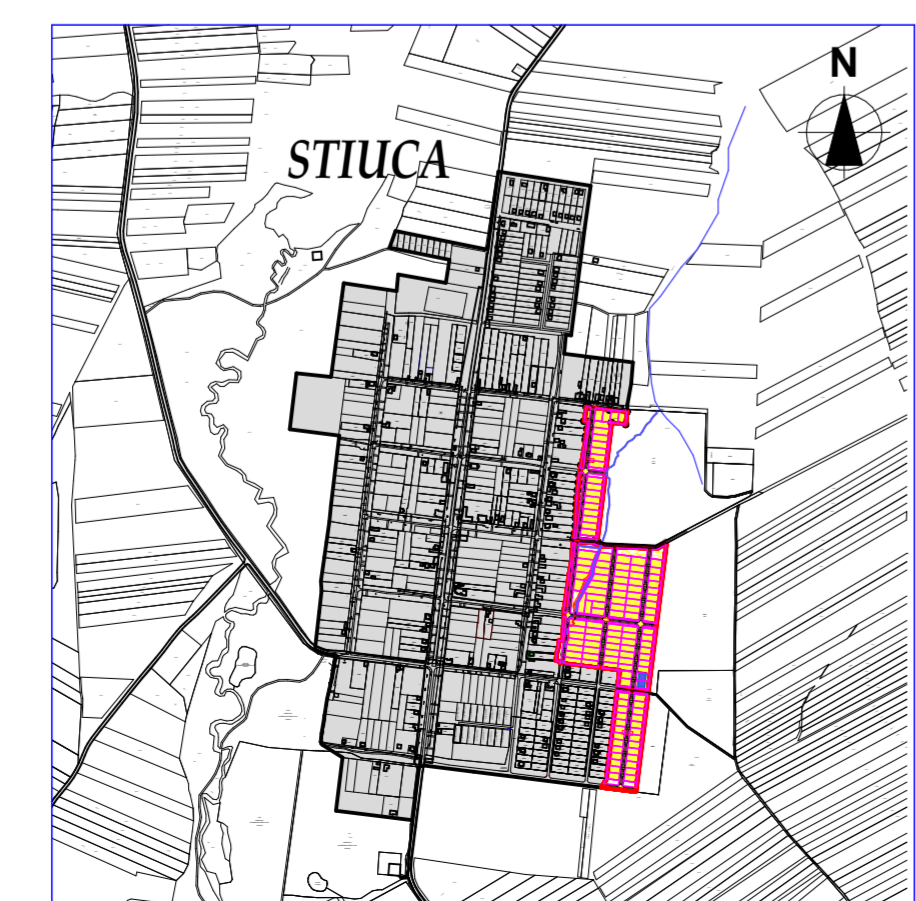
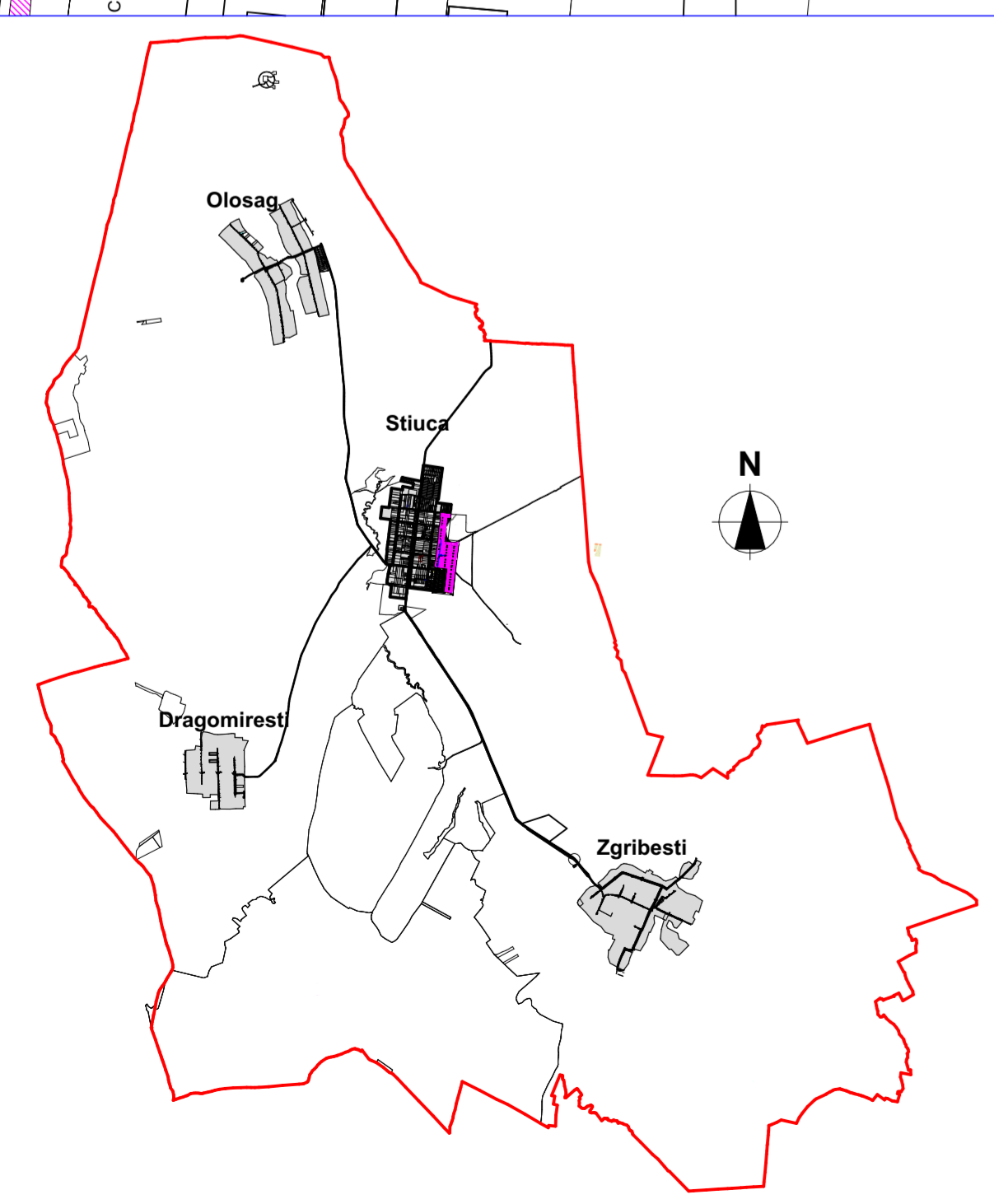
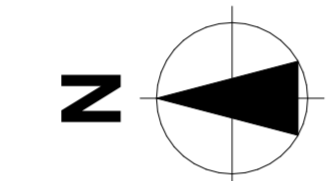
Nr.	X	Y
1	451156.881	245023.319
2	451156.881	245023.319
3	451156.881	245023.319
4	451156.881	245023.319
5	451156.881	245023.319
6	451156.881	245023.319
7	451156.881	245023.319
8	451156.881	245023.319
9	451156.881	245023.319
10	451156.881	245023.319
11	451156.881	245023.319
12	451156.881	245023.319
13	451156.881	245023.319
14	451156.881	245023.319
15	451156.881	245023.319
16	451156.881	245023.319
17	451156.881	245023.319
18	451156.881	245023.319
19	451156.881	245023.319
20	451156.881	245023.319
21	451156.881	245023.319
22	451156.881	245023.319
23	451156.881	245023.319
24	451156.881	245023.319

INVENTAR DE COORDONATE ESTERNE 1970 CAD 404111 S-21000 MP

Nr.	X	Y
1	451156.881	245023.319
2	451156.881	245023.319
3	451156.881	245023.319
4	451156.881	245023.319
5	451156.881	245023.319
6	451156.881	245023.319
7	451156.881	245023.319
8	451156.881	245023.319
9	451156.881	245023.319
10	451156.881	245023.319
11	451156.881	245023.319
12	451156.881	245023.319
13	451156.881	245023.319
14	451156.881	245023.319
15	451156.881	245023.319
16	451156.881	245023.319
17	451156.881	245023.319
18	451156.881	245023.319
19	451156.881	245023.319
20	451156.881	245023.319
21	451156.881	245023.319
22	451156.881	245023.319
23	451156.881	245023.319
24	451156.881	245023.319

INVENTAR DE COORDONATE ESTERNE 1970 CAD 404111 S-21000 MP

Nr.	X	Y
1	451156.881	245023.319
2	451156.881	245023.319
3	451156.881	245023.319
4	451156.881	245023.319
5	451156.881	245023.319
6	451156.881	245023.319
7	451156.881	245023.319
8	451156.881	245023.319
9	451156.881	245023.319
10	451156.881	245023.319
11	451156.881	245023.319
12	451156.881	245023.319
13	451156.881	245023.319
14	451156.881	245023.319
15	451156.881	245023.319
16	451156.881	245023.319
17	451156.881	245023.319
18	451156.881	245023.319
19	451156.881	245023.319
20	451156.881	245023.319
21	451156.881	245023.319
22	451156.881	245023.319
23	451156.881	245023.319
24	451156.881	245023.319



LEGENDA

- LIMITA INTRAVILAN
- LIMITA PARCELA CE FACE OBIECTUL PUZ
- LIMITA DE PROPRIETATE
- LIMITA DE PROPRIETATE PARCELE VECINE PROPUSE
- LIMITA DE IMPLANTARE A CLADIRILOR
- ZONA SPATII VERZI
- ZONA IMPLANTAREA CLADIRILOR
- CONSTRUCTII INTABULATE
- 400823 NUMERE CADASTRALE
- 67 PUZ PROPUZ - NUMEROTARE PARCELE
- 12 DIMENSIUNI PROFILE STRADALE
- CONSTRUCTII PROPUSE

- ### ZONIFICARE
- TEREN EXTRAVILAN
 - TEREN LOCUINTE - Lm
 - TEREN DOTARI SI SERVICII DE INTERES GENERAL - Is
 - TEREN ZONA VERDE - Zv
 - TEREN CIRCULATII - C

POT	EXISTENT	PROPUS	%
POT. existent	400823	67	0%
POT. maxim propus LOCUINTE - Lm	129745	10000	35%
POT. maxim propus DOTARI SI SERVICII - Is	129745	10000	35%
C.U.T. existent	400823	67	0
C.U.T. maxim propus LOCUINTE - Lm	129745	10000	1.05
C.U.T. maxim propus DOTARI SI SERVICII - Is/Lm	129745	10000	1.05

REGULI GENERALE DE NATIVE
Lm - Pajubal-PHEM
Is - Pajubal-PHEM

NUMERIMANEA DE CONSTRUCTOR
Hmax. Corneal: 29m-33m
Hmax. Corneal DSHF-PHEM: 59m-75m
Hmax. Corneal DSHF-PHEM: 3m

TPN MELIOARE
Teren - parat 0-3
Supraf - parat 0-7

Locurile pot fi de un tip sau altul, toate sau cupse
Alimentatia de foraj distat 0m
Distanta minima de la linia de coasta 10m

SURFAWE	EXISTENT	PROPUS	%
TEREN EXTRAVILAN	129745	10000	100.00
LOCUIRE - Lm	129745	10000	67.15
DOTARI SI SERVICII DE INTERES GENERAL - Is	129745	10000	3.33
ZONA VERDE - Zv	129745	10000	11.82
CIRCULATI - C	129745	10000	17.80
TOTAL	129745	10000	100.00

ACEST PROIECT SI INFORMATIILE CUPRINSE IN EL NU POT FI COPRIATE, REPRODUSE SAU UTILIZATE, PARTIAL SAU IN INTREGIME, DECAT CU ACORDUL SCRIS AL S.C. atelier TREI SRL SI NU VOR FI FOLOSITE IN ALT SCOP DECAT CEL PENTRU CARE AU FOST ELABORATE.

Proiectant: **s.c. atelier TREI s.r.l.**
C.U.I. RO 15897266

Beneficiar: **PRIMARIA COMUNEI STIUCA**

Titlu proiect: **"PUZ - ZONA DE LOCUINTE SI FUNCTIUNI COMPLEMENTARE"**

Scara: **1:1000**

Data: **APR. 2020**

Sit proiect: arh. Cosmin Sandu BLOJOU

Proiectat: arh. Laurentiu STOIAN

Intocmit: arh. Laurentiu STOIAN

Verificat: arh. Cosmin Sandu BLOJOU

Nr. pr.: **182/2020**

Faza: **P.U.Z.**

Nr. pl.: **182 U03**

SITUATIA PROPUZA